



DEEP ROOF LIGHTING

Triac dimming fixtures back up to 60W
AC wiring, Also for no-dimm fixtures



- UL Listed for damp locations.
- Emergency Driver output connect to AC input of LED Lights
- Manual test.
- Built-in high power AC relay to control normal led driver operation.
- Used with Lithium iron phosphate battery.
- Over-discharging protection
- Rest mode
- 90 minutes emergency time.
- Battery pack with built-in charging and discharging protection board.
- Ambient range to 0-60°C
- Suitable for lights up to 60W



Ordering data

Model No.	Rated Input	Rated Output	Emergency time	Battery pack
LMDP-ST4AC-170P	AC100-277V,50/60Hz, 80mA 5W max	DC 170V max,25mA max 4W constant power	Emergency >1.Shours charge >24hours	LiFePO4 6.4V 1.6Ah,10.24Wh IFR186S0x2 pcs,2slp
LMDP-ST8AC-170P	AC100-277V,50/60Hz, 80mA 5W max	DC 170V max,50mA max 8W constant power	Emergency >1.Shours charge >24hours	LiFePO4 6.4V 3.2Ah,20.48Wh IFR186S0x4 pcs,2s2p

Application:

LMDP-ST4AC Triac dimming lights < 40W, No-dimm lights < 4W

LMDP-ST8SC Triac dimming lights < 60W, No-dimm lights < 8W

CAUTION:

- **DO NOT USE OUTDOORS.**
- DO NOT MOUNT NEAR GAS OR ELECTRONIC HEATERS.
- EQUIPMENT SHOULD BE MOUNTED IN LOCATIONS AND AT HEIGHTS WHERE IT WILL NOT BE SUBJECTED TO TAMPERING BY UNAUTHORIZED PERSONNEL.
- THE USE OF ACCESSORY EQUIPMENT NOT RECOMMENDED BY THE MANUFACTURER MAY CAUSE AN UNSAFE CONDITION.
- DO NOT USE THIS EQUIPMENT FOR OTHER THAN ITS INTENDED USE.
- Use with grounded, UL Listed, damp location rated fixtures and case should be grounding.
- The equipment is intended for ordinary locations and for permanent installation into one or more Listed emergency luminaires.

Protections:

- Input over current protection.
- Output over voltage protection.
- Output under current protection.
- Output short circuit protection.

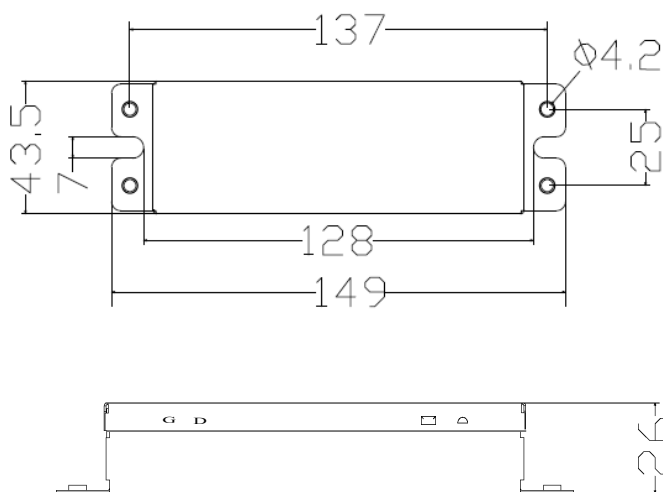
Test switch

- Emergency conversion Kit will go into emergency mode if test switch is pressed when main supply is on, while it will go into charging mode if test switch is not pressed.
- In emergency mode, press the test switch for 3 seconds to turn off the current emergency state.

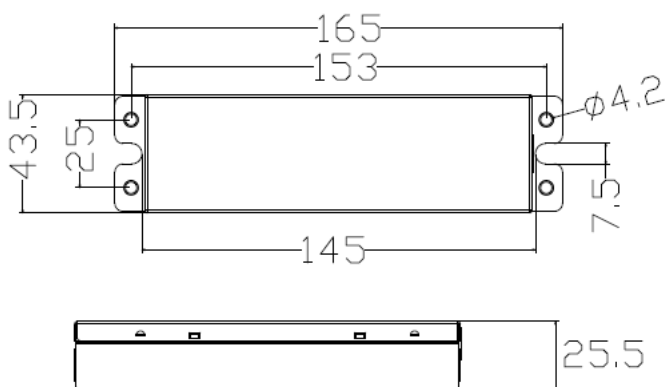
LED indicator

- Red stable: charging mode or charging full.
- Red off : main power off or discharging mode.

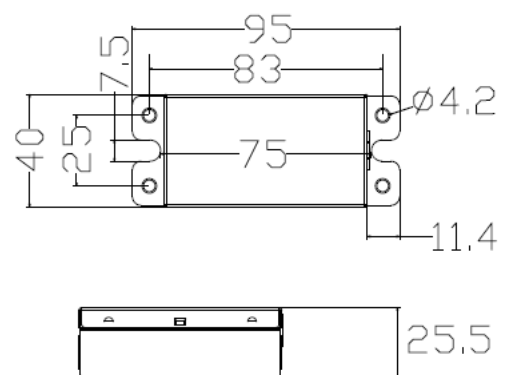
Dimensions



Emergency driver
149×43.5×26mm



8W Battery pack
LiFePO4 6.4V3.2Ah

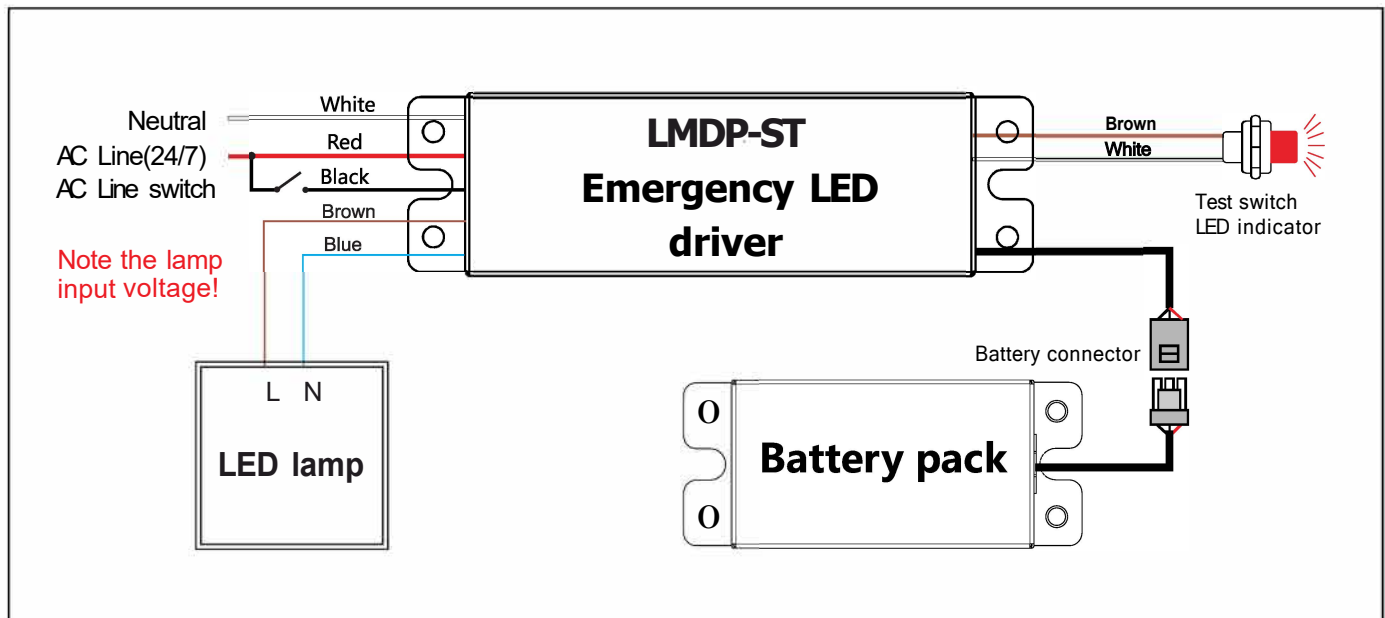


4W Battery pack
LiFePO4 6.4V1.6Ah

Installation instruction:

- Please install this product properly by the licensed electrician.
- Please check and confirm all the data and usage surrounding before installation.
- Damp or wet location installation is OK
- This item could be used in the sealed fixtures or installed open area of the fixtures.
- Please keep it away from the flammable materials with a place of good heat dissipation.
- Please charge the battery consistently for >24 hours for the first time usage so as to activate the whole battery cells of discharging/charging duration.

Wiring diagram



Maintenance:

- Please turn off the main power every 3 months, so as to let the battery operate a charging/discharging circle. This will help make battery sustain a longer lifetime.
- Please check the emergency function with the push test button.
- Battery capacity is >60% when factory deliver goods, so it could be consistently stocked for Max 12 months.

Notes:

Users are not suggested replacing the batteries by themselves. If needed, please use the nominated batteries pack by the manufacturer and contact with us for the instructions of maintenance.

Warranty

- Warranty 5 years.
- Except for the following circumstances:
 - 1) Improper installation or operation.
 - 2) Misuse.
 - 3) Abuse.
 - 4) Unauthorized or improper repair alteration.
 - 5) Accident or negligence in use, storage, transportation.
 - 6) Any natural acts.